



Public Expose

PT Elang Mahkota Teknologi Tbk

**SCTV Studio, 8th Floor SCTV Tower, Senayan City
Jakarta, 3 June 2021**





AGENDA



About EMTEK Group



Track Record of EMTEK Group



EMTEK Group's Performance



AGENDA



About EMTEK Group



Track Record of EMTEK Group



EMTEK Group's Performance

BOARD OF DIRECTORS



Alvin W. Sariaatmadja
President Director



Sutanto Hartono
Vice President Director



Jay Geoffrey Wachter
Director



Yoslinda Nasution
Director



Sutiana Ali
Director



Titi Maria Rusli
Director



BOARD OF COMMISSIONERS



Eddy K. Sariaatmadja
President Commissioner



Susanto Suwanto
Commissioner



Amit Kunal
Commissioner



Fofa Sariaatmadja
Commissioner



Stan Maringka
*Independent
Commissioner*



Pandu Patria Sjahrir
*Independent
Commissioner*



BUSINESS PORTFOLIO EMTEK GROUP



Media

2 nationwide FTA stations in Indonesia



Popular local FTA station



Outdoor Advertising



Content Production & Distribution



Talent and Influencers Management



Digital Publishing



Online Video Platform



Event Management



Solution

IT & Telco Solutions



Payment & Retail Services



Others

TV Home-Shopping



Healthcare Provider: EMC Hospital and OMNI Hospital



Investment in diversified dotcom portfolio





AGENDA



About EMTEK Group



Track Record of EMTEK Group



EMTEK Group's
Performance

Strategic Initiatives



Acquisition of SAME

On 30 November 2020, the Company had completed the acquisition of 4,241,000,000 shares representing 71.88% of shares that amounted to Rp581,017,000,000 of issued and paid up capital of PT Sarana Meditama Metropolitan Tbk ("SAME") that owned and operated 4 OMNI Hospitals.



Shares Buyback

During 2020, EMTEK has conducted shares buyback of 140,665,065 shares or 2.49% of paid in capital across 3 periods



Stock Splits

In January 2021, the Company conducted a stock split with a 10 for 1 ratio. The stock splits has been a success with the Company's share price increasing by 23.04% over the Q1 of 2021.



Capital Increase without Pre-Emptive Rights (PMTHMETD)

In March 2021 the Company completed a Capital Increase without Pre-Emptive Rights ("PMTHMETD") by issuing 4,757,945,063 new shares.



The #1 Media Choice in Indonesia



25.8%

National TV
Audience Share



~100M

Average Monthly Visitors
across Digital Publishing Media



~72M

Monthly Online Video
Watchers



~250K Hours

Content Library of Drama Series,
Film for Television (FTV), Movies,
and Entertainment



68%

of our Audience are Millennials



Notes: Data as of March 2021



INDONESIA STOCK EXCHANGE 2020

Significantly Improved Public Listed Companies (PLCs) on ASEAN Corporate Governance Scorecard (ACGS) category



TEMPO 2020

The Most Appreciation Corporate Social Responsibility

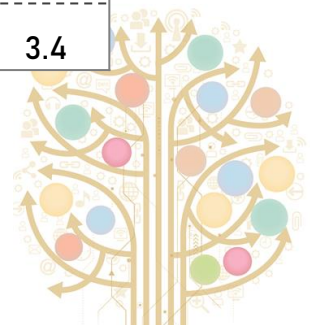
The #2 & #3 Highest Audience Share and TV Rating

**Q1
2021**

Top 10 Audience Share
(National + Network TV)
ALL 11 Cities, ALL 5+

Source: Nielsen

CHANNEL	ALL TIME		CHANNEL	PRIME TIME		CHANNEL	NON-PRIME TIME	
	TVR	Share		TVR	Share		TVR	Share
RCTI	2.5	21.7	RCTI	7.3	32.0	RCTI	1.2	14.5
SCTV	1.7	14.4	SCTV	3.4	14.8	SCTV	1.2	14.2
IVM	1.3	11.4	IVM	2.3	9.9	IVM	1.1	12.4
MNC TV	1.2	10.3	MNC TV	2.1	9.0	MNC TV	1.0	11.2
ANTV	1.0	8.4	ANTV	1.7	7.3	ANTV	0.8	9.1
GTV	0.8	6.9	GTV	1.1	4.8	GTV	0.7	8.3
TRANS	0.7	6.0	TRANS7	1.0	4.4	TRANS	0.6	7.6
TRANS7	0.6	5.4	TRANS	0.9	3.8	TRANS7	0.5	6.2
RTV	0.4	3.5	RTV	0.8	3.4	RTV	0.3	3.5
NET	0.3	2.8	TV One	0.5	2.1	NET	0.3	3.4



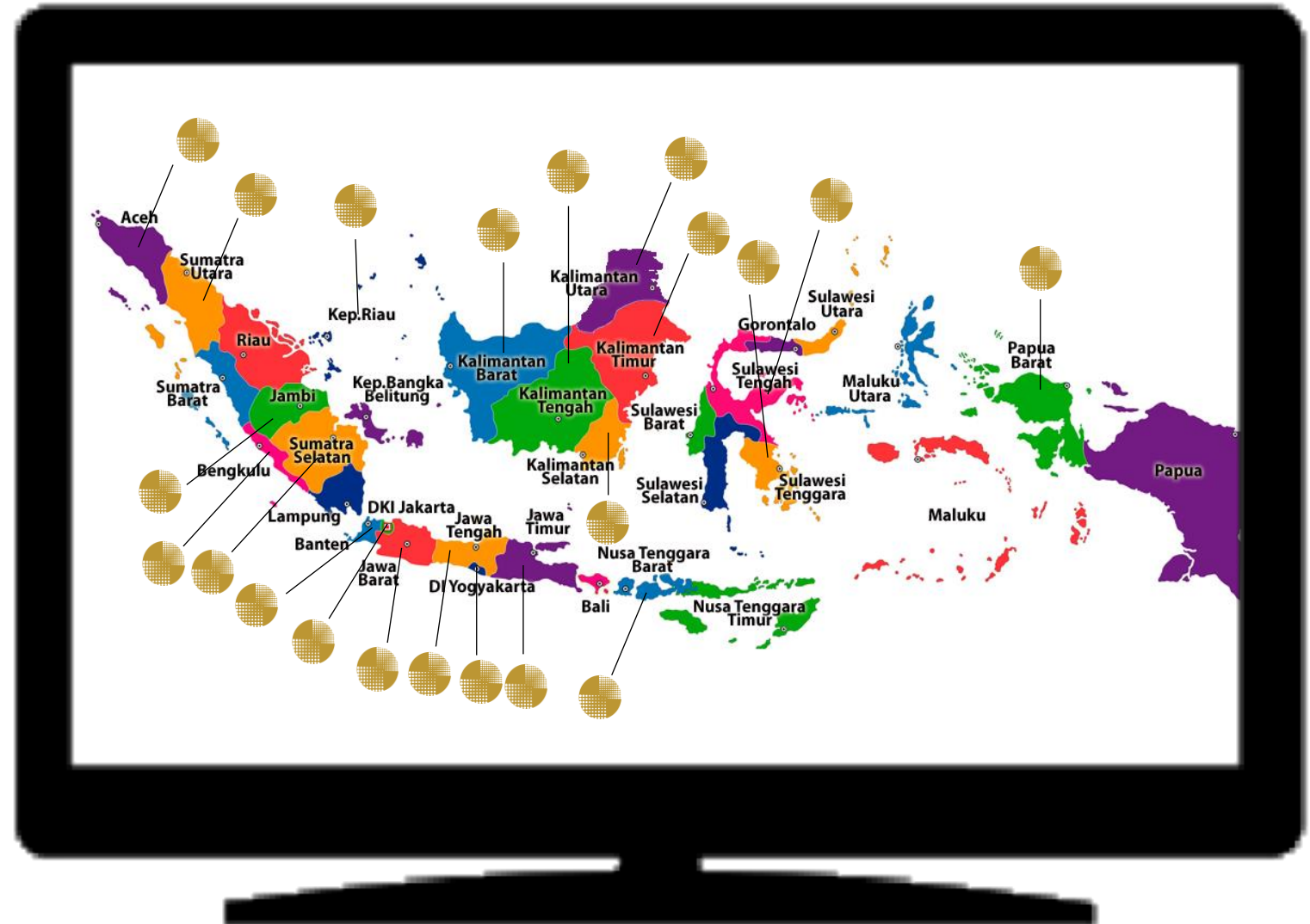
*Primetime = 18:00-23:00

*Non Prime = 02:00-18:00 &
23:00-26:00

Transition to TV Digital: We have secured 21 MUXs in total to cover 21 provinces in Indonesia



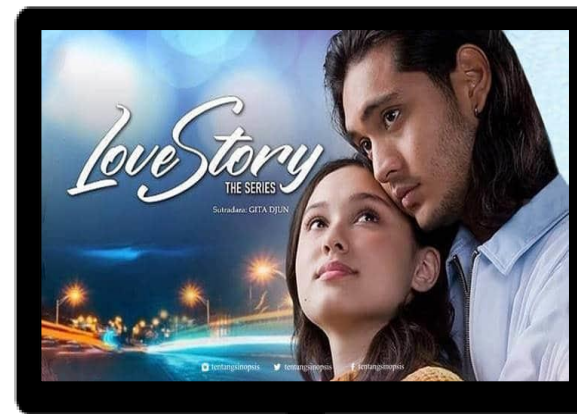
- ❑ EMTEK's subsidiaries will be able to broadcast its free to air television channels to many regions in Indonesia, which consist of major cities in Indonesia



Since Early Jan 2021, We Have Delivered Fresh Sinetrons and Programs to Further Strengthen Our Leadership Position



TVR: 4,0 Share: 17,1



TVR: 3,7 Share: 13,9



TVR: 3,1 Share: 11,8



TVR: 2,5 Share: 10,5



TVR: 3,3 Share: 14,7



Nex Parabola has delivered more than 1.5 Million activation as per March 2021



Vidio is the #1 Local OTT in Indonesia

The biggest content library

250k+ Hours VODs
109 Linear
31 Radio
142 Hours Originals Series
168+ Live events

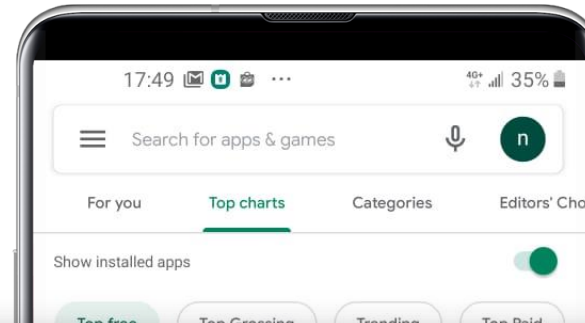



..with the **widest distribution** in Indonesia

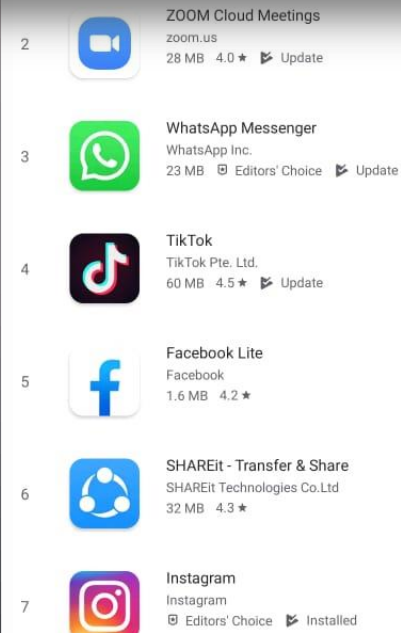
TV Apps. 

Android Phone 

Telco Operator 



1  Vidio - Watch Video, TV & Live Streaming
PT Vidio Dot Com
17 MB Editors' Choice Update



MAU

72M

Mar'21

mobile visitors

#1 OTT

comscore Mar'21

paid subscribers

#3 OTT

ID MPA Jan'21

Top Apps Indonesia

#1 OTT

DailySocial Mar'21

Extensive Local Content library, Sports, Live Stream access to all FTA and in-house virtual events win Vidio as Indonesia's #1 OTT

Top-rating TV Shows & Complete National FTA Channels



Exclusive Local Original Series & Exclusive AVOD Series



The Most Complete Exclusive Sports Content



Prime Foreign Content



Live Streaming Events

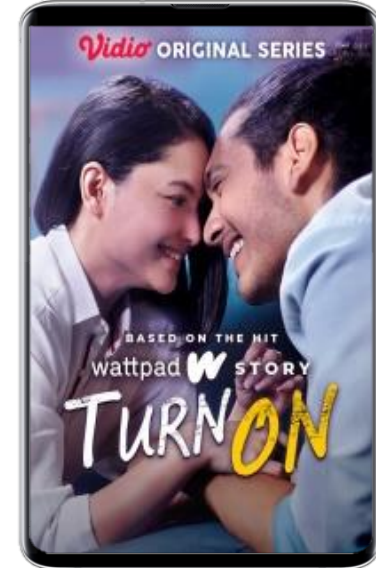
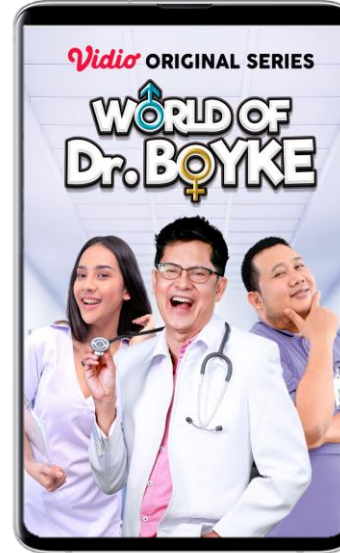




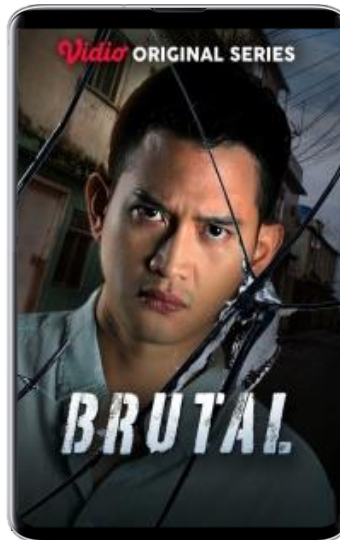
The Most Aggressive OTT with Local Original Series Release in the Market



Produced by:



Produced by:



Produced
by: **FAS**



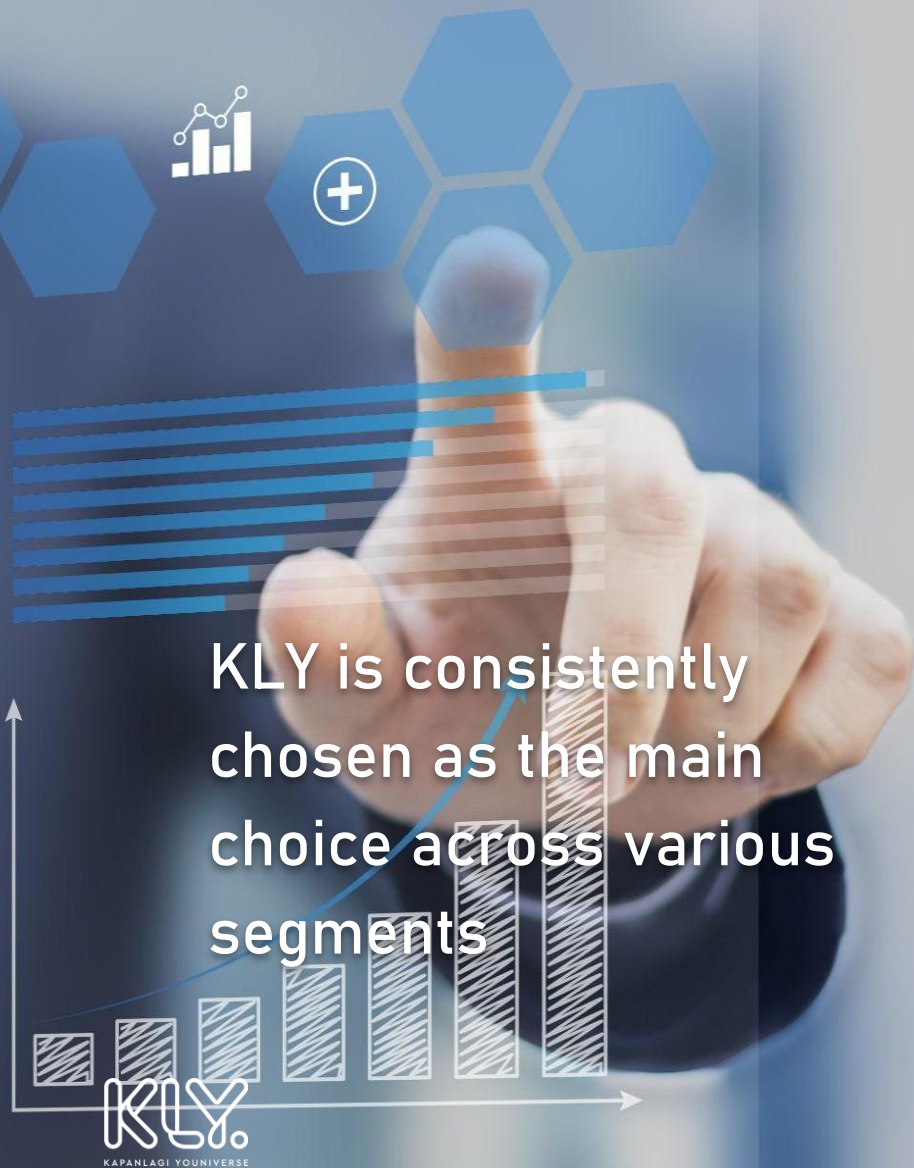
Produced
by:



“In Q1 2021, **Samara Live** continues to strengthen its footprints in providing and novel experiences to brands and customers through a nation-wide online shopping festival, the launch of IP-driven digital content channel, and the development of a state-of-the-art virtual venue.”



COMSCORE RANK



TOP 5 ON NEWS

#4 **LIPUTAN6**
#5 **merdeka.com**

TOP 5 ON LIFESTYLE

#1 **Dream**
MUSLIM LIFESTYLE .CO.ID
#5 **FIMELA**

TOP 3 ON ENTERTAINMENT NEWS

#2 **BRIL!O**
.NET
#3 **KapanLagi**
.com

TOP 5 ON SPORTS

#1 **BOLA.COM**
#5 **BOLA.NET**

TOP 10 ON AUTOMOTIVE

#7 **OTOSIA.COM**
OTOMOTIF INDONESIA

References: **Comscore** (Q1, 2021)



EMTEK has welcomed OMNI Hospitals to the ecosystem to strengthen EMTEK position in Health industry



Supporting the government vaccination program, EMC and OMNI Hospitals are at the frontline to provide the vaccination

klikdokter

AYO AJAK ORANG TUA, MERTUA, KAKEK, NENEK, KELUARGA TERCINTA UNTUK VAKSIN COVID-19!

GRATIS!

Mulai 25 Maret – 31 Maret 2021

Lokasi :
Summarecon Mall Kelapa Gading 5
Lantai 3 (depan tenant Putien)
Lewat lobby MKG 5 (samping Hotel Harris)

Untuk lansia diatas usia 60 tahun
Hanya untuk pemilik KTP Jakarta atau surat domisili Jakarta

Cara daftarnya mudah:

1. Klik <http://bit.ly/kd-vaksinansia>
2. Pilih tanggal
3. Isi Alamat Email
4. Isi data diri (Nama, NIK, Jenis Kelamin, Tanggal lahir, No. HP atau WA)
5. Pilih Jam Kedatangan
6. Klik Submit

Scan QR Code

Tunjukkan KTP Asli kepada petugas pre-registrasi untuk verifikasi data

Yuk daftar dan kita #sukseskanvaksinasi di Indonesia!

Informasi lebih lanjut,
Layanan Bebas Pulsa : 08001200888 (08.00 – 16.30)
WA : 0895-2003-2409 (08.00 – 16.30)

OMNI HOSPITALS emc+ SENAYAN CITY ALODOKTER

VAKSINASI COVID-19

07 - 10 APRIL

GRATIS UNTUK TENAGA PENDIDIKAN (GURU) & 2 LANSIA + 1 ORANG PENGANTAR*

The Hall
Senayan City lantai 8
9.00 - 16.00 WIB

Akses melalui lift The Hall
(belakang Starbucks Reserve GF)

PILIH JADWAL VAKSIN ANDA

DI APLIKASI ALODOKTER

*Berusia 60 tahun keatas dan memiliki KTP DKI Jakarta serta Guru yang terundang oleh Dinas Pendidikan DKI.

SCAN FOR MORE DETAILS

FIND US ON

Download on the App Store

GET IT ON Google Play

@SENAYANCITY SENAYANCITYMALL SENAYANCITY // BELICAF.JKT WWW.SENAYANCITY.COM





EMC Tangerang's renovation project has been finished, providing many new facilities to the hospital



Some latest additions to the facilities:

- ☐ 262 beds
- ☐ Cathlab
- ☐ PCR Lab
- ☐ Mammography equipment



Corporate Social Responsibility and Sustainable Development 2020



- EMTEK through Pundi Amal Peduli Kasih Foundation (YPP) invites business partners and the community to participate in the form of donations, assistance and partnerships.



- EMTEK Group through EMTEK Peduli Corona signed a Memorandum of Understanding with the Ministry of Research and Technology of the Republic of Indonesia regarding the Procurement and Utilization of Covid-19 Innovative Products.



Corporate Social Responsibility and Sustainable Development 2021



- YPP provided Wifi equipment and internet networks in several transmissions areas such as Kupang, Banda Aceh, Kediri, Cilegon, Jember, and Banyumas.





AGENDA



About EMTEK Group



Track Record of EMTEK Group



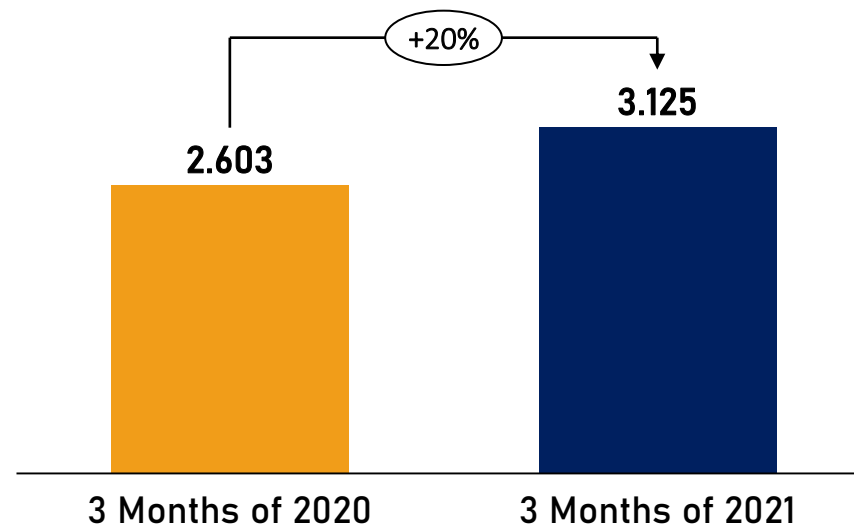
EMTEK Group's Performance

REVENUES PERFORMANCE OF EMTEK GROUP

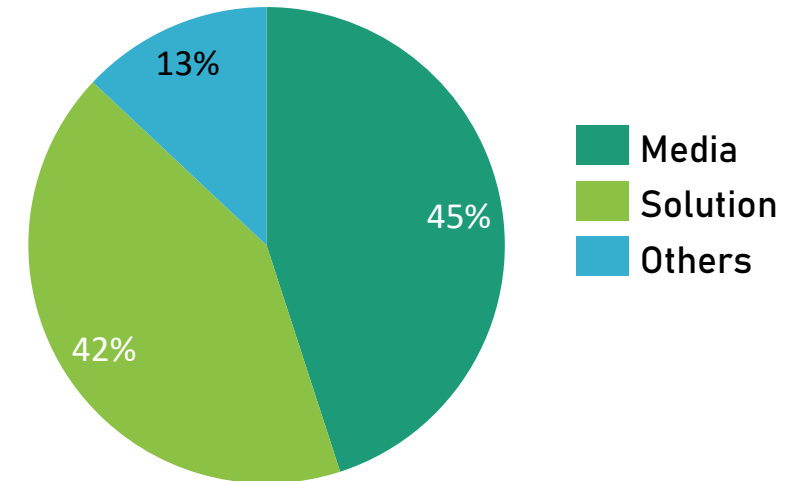
3 Months of 2020 vs 3 Months of 2021

(In billion Rupiah)

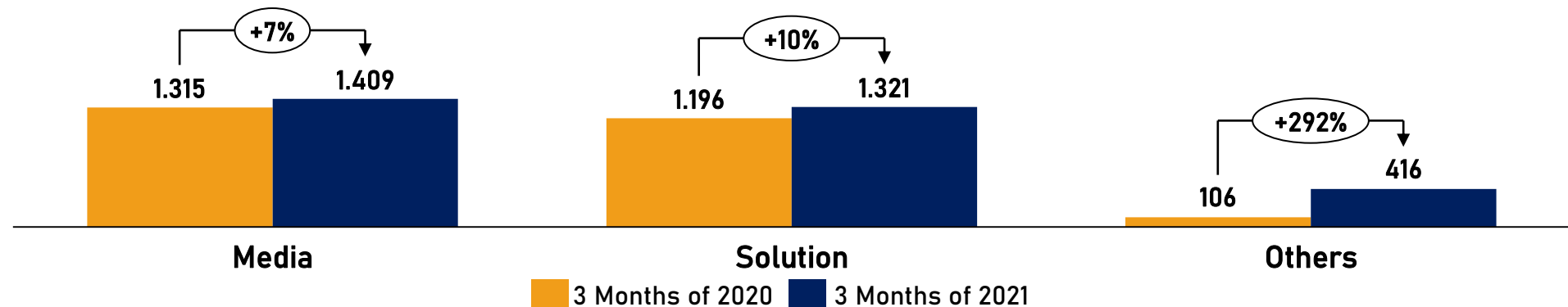
Revenues - Net



**Revenues Contribution Per Segment
(3 Months of 2021)**



Revenues - Net Per Segment before Elimination





PERFORMANCE OF EMTEK GROUP

Profit or Loss for 3 Months of 2020 vs 3 Months of 2021

(In billion Rupiah)

Information	3 Months of 2020*	3 Months of 2021
Margin of Gross Profit	30%	31%
Margin of Operating Profit	24%	18%
Margin of Net Profit (Loss)	-14%	7%
Earnings (Loss) per share (full amount)	-2,79	1,85

Information	3 Months of 2020*	3 Months of 2021	Increase (Decrease)
Revenues -Net	2.603	3.125	20%
Cost of Revenues	(1.817)	(2.166)	19%
Gross Profit	786	959	22%
Selling expenses	(27)	(28)	3%
General and administrative expenses	(401)	(454)	13%
Gain (loss) on sale of fixed asset - Net	0	(0)	-292%
Gain on foreign exchange - net	275	86	-69%
Other operating expense - net	(6)	(7)	13%
Operating Profit	627	556	-11%
Finance income -Net	35	16	-57%
Gain on investments -Net	6	36	541%
Finance cost	(7)	(52)	662%
Share of loss from associated entities - Net	(102)	(216)	112%
Profit before income tax	559	340	-39%
Income tax expenses - Net	(187)	(122)	-35%
Profit for the year from continuing operations	372	218	-41%
Discontinued Operation			
Loss from discontinued operation - net of income tax expense	(749)	-	-100%
Profit (loss) for the period	(377)	218	-158%
Profit (loss) for period attributable to:			
Owners of the Parent Entity	(157)	102	-165%
Non-controlling interest	(220)	116	-153%

* Restated 2020



PERFORMANCE OF EMTEK GROUP

Financial Position of 31 March 2021

(In billion Rupiah)

INFORMATION	31 DECEMBER 2020	31 MARCH 2021	INCREASE (DECREASE)
ASSETS			
Total Current Assets	7.330	16.994	132%
Total Non-Current Assets	10.554	10.588	0%
Total Assets	17.884	27.582	54%
LIABILITIES			
Total Current Liabilities	2.865	3.780	32%
Total Non-current Liabilities	2.620	1.456	-44%
Total Liabilities	5.485	5.236	-5%
EQUITY			
Total Equity attributable to Owners of the Parent Entity	10.688	20.226	89%
Non-controlling interests	1.711	2.120	24%
Total Equity	12.399	22.346	80%



PERFORMANCE OF EMTEK GROUP

Cash Flows of 3 Months of 2020 vs 3 Months of 2021

(In billion Rupiah)

INFORMATION	3 MONTHS OF 2020	3 MONTHS OF 2021	INCREASE (DECREASE)
Net Cash Provided by Operating Activities	42	473	1022%
Net Cash Used in Investing Activities	(83)	(391)	373%
Net Cash Provided by Financing Activities	607	9.307	1433%
Net Increase in Cash and Cash Equivalents	566	9.389	1557%
Effect of Changes in Foreign Exchange Rates on Cash and Cash Equivalent	336	90	-73%
Cash and Cash Equivalent at Beginning of the Period	3.315	2.694	-19%
Cash and Cash Equivalent at Ending of the Period	4.217	12.173	189%





THANK YOU



For further information:

corsec@emtek.co.id

www.emtek.co.id

18th Floor, SCTV Tower, Senayan City

Jl. Asia Afrika Lot 19

Jakarta 10270 – Indonesia